

HEAVY | MATE F

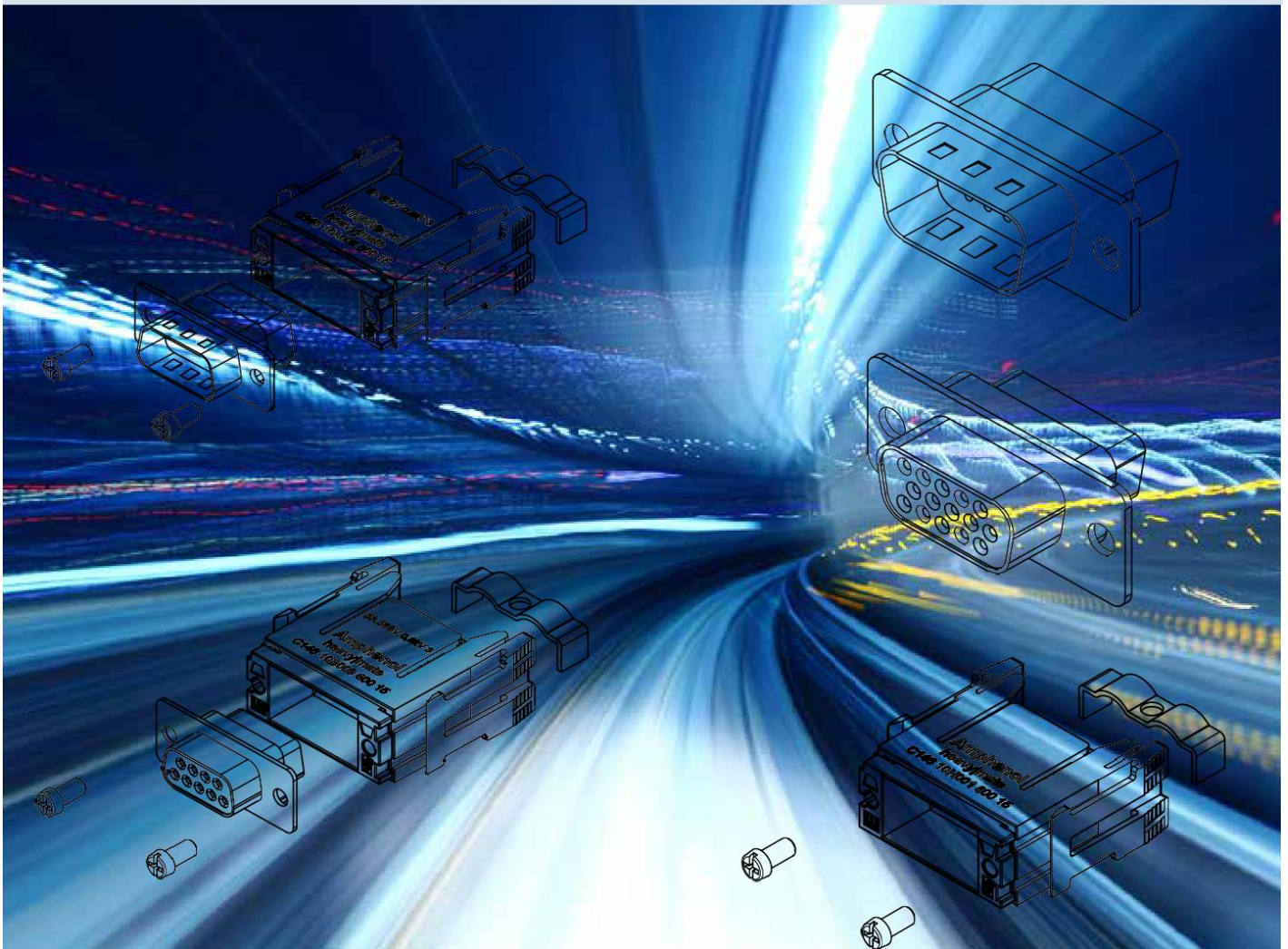
D-SUB Module

Features

- Number of contacts: 9 or 15
- Rated current: 5A
- Rated Voltage: 500V
- Cable diameter: 2 x 5 to 12 mm
- Mating cycles: >500
- 1 mm contacts

Areas of Application

- Railway
- Factory automation
- Industry 4.0
-



Technical Data

General Characteristics	Standard	Value	Value
Number of contacts		9	15
Termination technique		Crimp	Crimp
Wire gauge		0,09 - 0,52 mm ² AWG 28 - AWG 20	0,09 - 0,25 mm ² AWG 28 - AWG24
Cable clamping range		2x 3,8 - 6,8 mm	
Flammability	UL 94	V-0	V-0
Electrical Characteristics	Standard	Value	Value
Rated voltage	IEC 60664-1	500 V	500 V
Pollution degree	IEC 60664-1	3	3
Installation (overvoltage) category	IEC 60664-1	3	3
Material group	IEC 60664-1	1	1
rated impulse withstand voltage	IEC 60664-1	0,8 kV	0,8 kV
Rated current T _{amb} = 40 °C		5 A	5A
Contact resistance	IEC 60512-2-1	≤ 10 mΩ	≤ 10 mΩ
Insulation resistance	IEC 60512-3-1	≥ 5x10 ⁹ Ω	≥ 5x10 ⁹ Ω
Climatical Characteristics	Standard	Value	Value
Climatic category	IEC 60068-1	40 / 125 / 10	40 / 125 / 10
Upper temperature	IEC 60512-11-9	+125 °C	+125 °C
Lower temperature	IEC 60512-11-10	-40 °C	-40 °C
Mechanical Characteristics	Standard	Value	Value
Mechanical operation	IEC 60512-9-1	≥ 500 mating cycles	≥ 500 mating cycles
Materials	Standard	Value	Value
Shield adapter		zinc alloy	zinc alloy
Cable clamp		zinc alloy	zinc alloy
Insulation material		zinc alloy	zinc alloy
Contacts		CuZn (brass)	CuZn (brass)
Contact plating		Au (gold)	Au (gold)
Partnumber			
Carrier	Pin	Carrier with Module - C146 10A009 600	Carrier - C146 10A015 901 15
	Socket	Carrier with Module - C146 10B009 600	Carrier - C146 10B015 901 15
		9 pole incl. adapter module	15 pole <u>excl.</u> adapter module
Adapter module		not necessary / included	C146 10H001 800 15
Contacts	0,09 - 0,25 mm ²	Pin - N01 010 0166 2	Pin - N01 008 0066 2
		Socket - N02 010 0166 2	Socket - N02 008 0066 2
Contacts	0,25 - 0,52 mm ²	Pin - N01 010 0168 2	
		Socket - N02 010 0168 2	